



NORTH SHORE FIRE DEPARTMENT

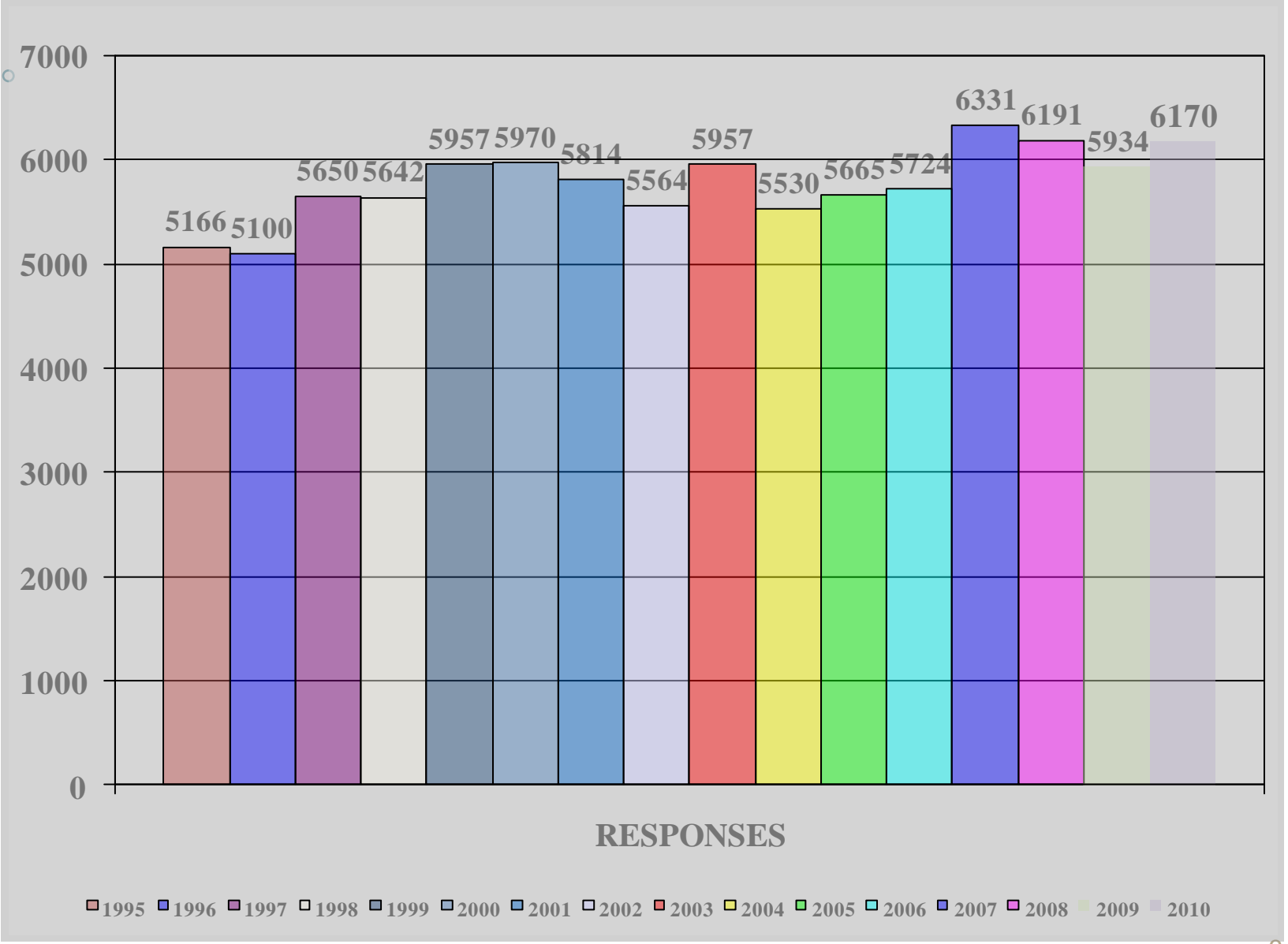
2010 RESPONSE INFORMATION

Total Responses

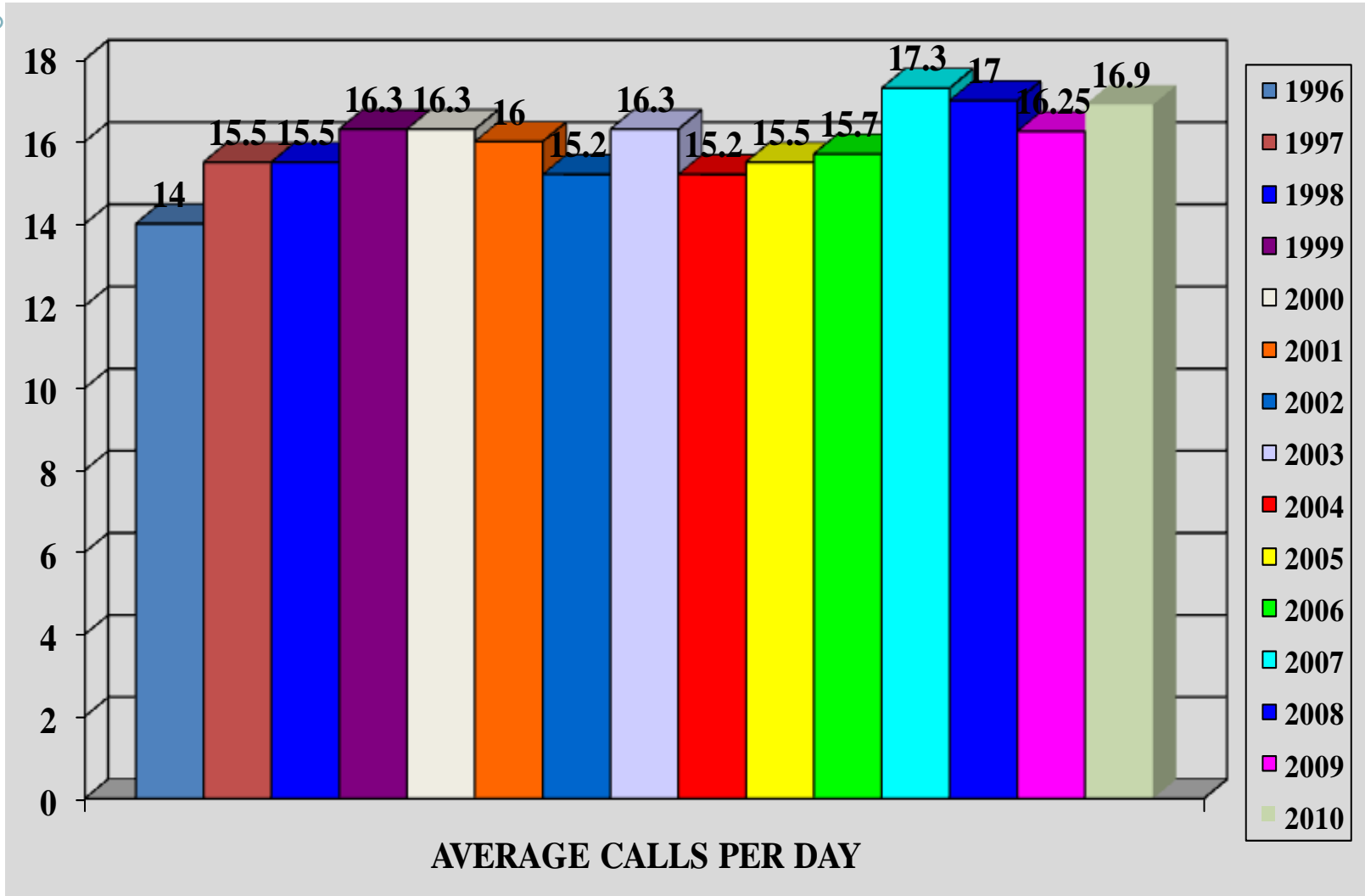
YEAR	FIRE	MEDICAL	TOTAL
1995	1674	3492	5166
1996	1740	3360	5100
1997	2144	3506	5650
1998	1965	3677	5642
1999	1930	4027	5957
2000	1954	4016	5970
2001	1744	4070	5814
2002	1695	3869	5564
2003	1954	4003	5957
2004	1608	3922	5530
2005	1691	3974	5665
2006	1642	4082	5724
2007	1994	4337	6331
2008	1671	4483	6191
2009	1785	4149	5934
2010	1827	4343	6170



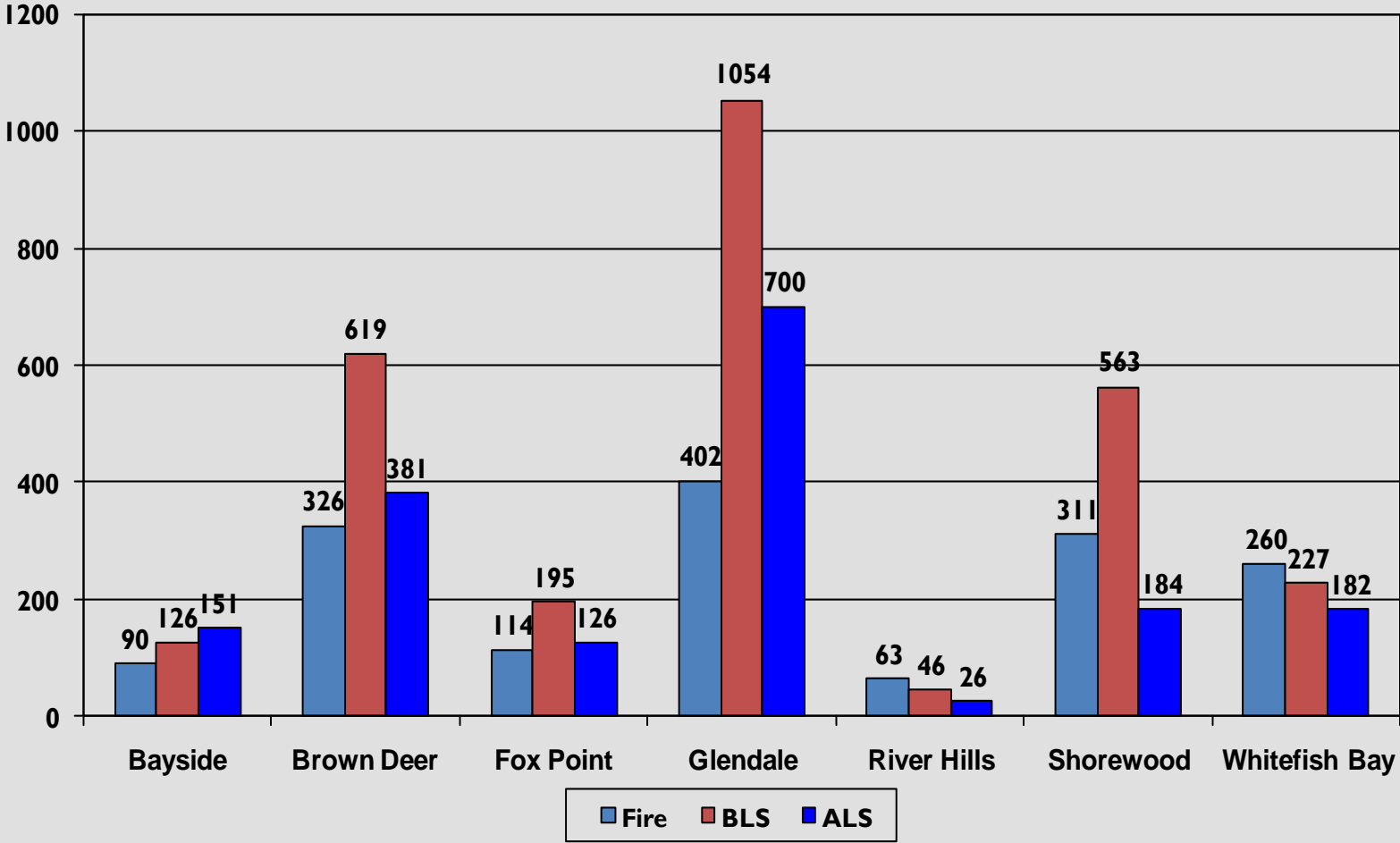
Total Responses



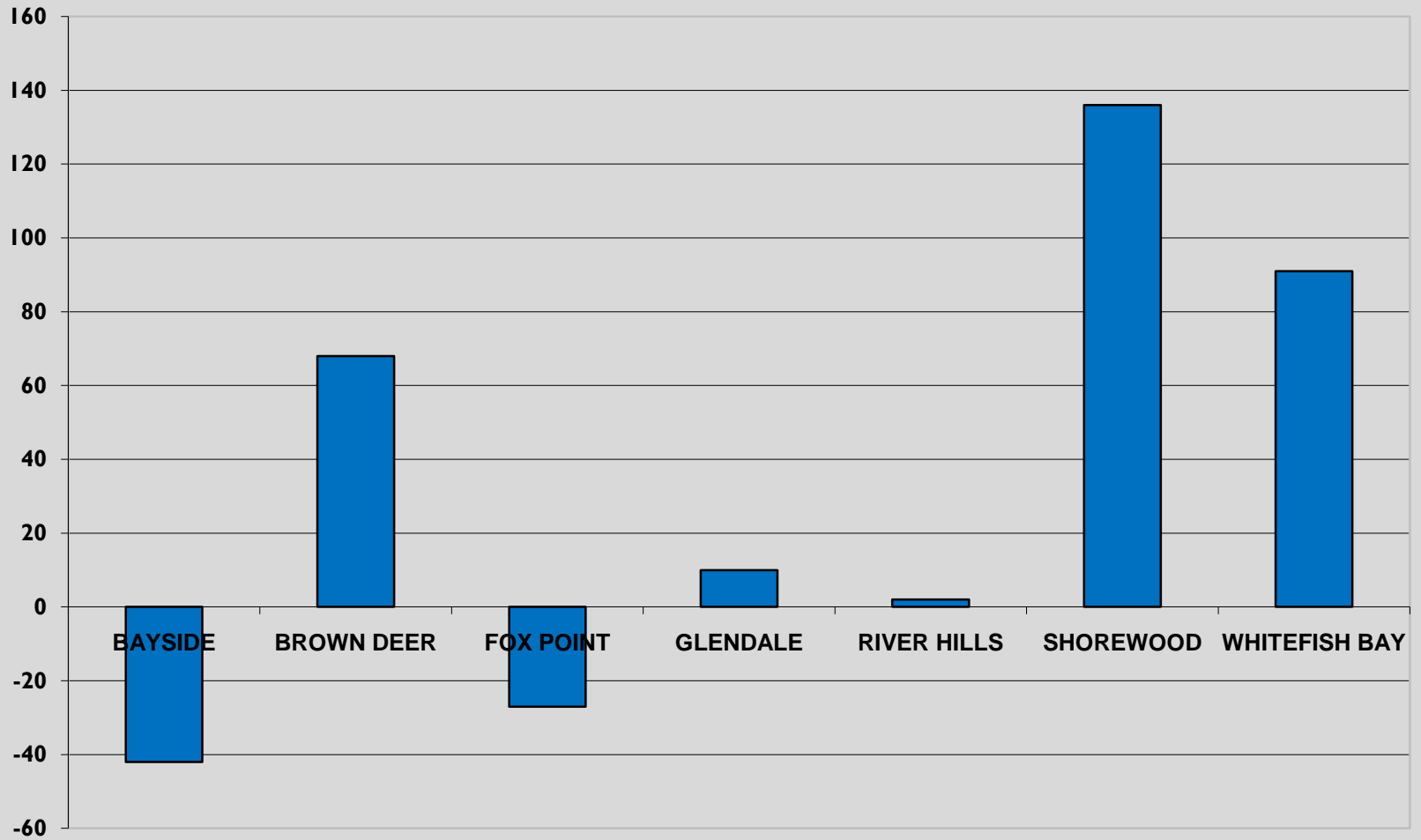
Average Calls Per Day



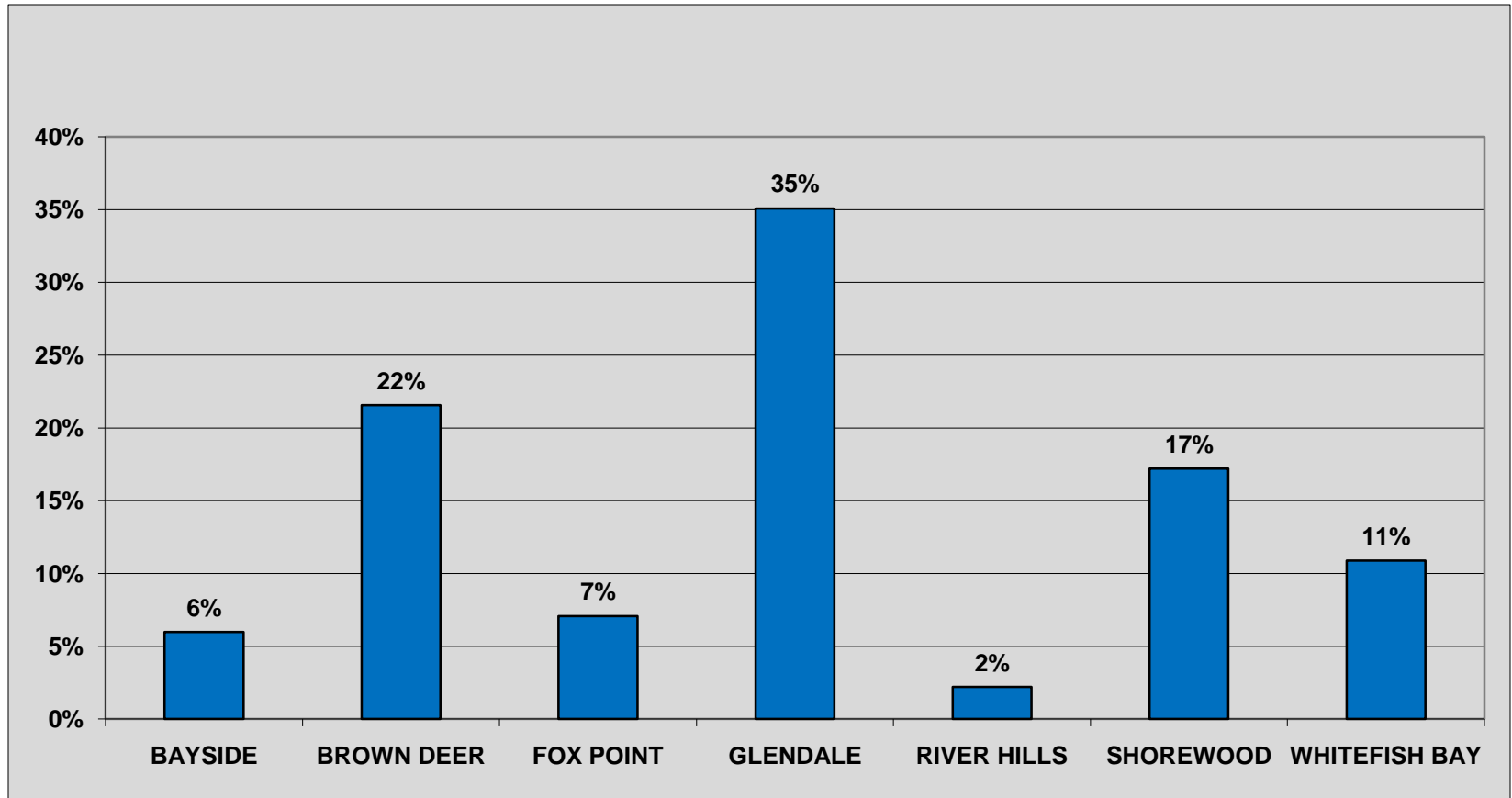
2010 Responses By Community



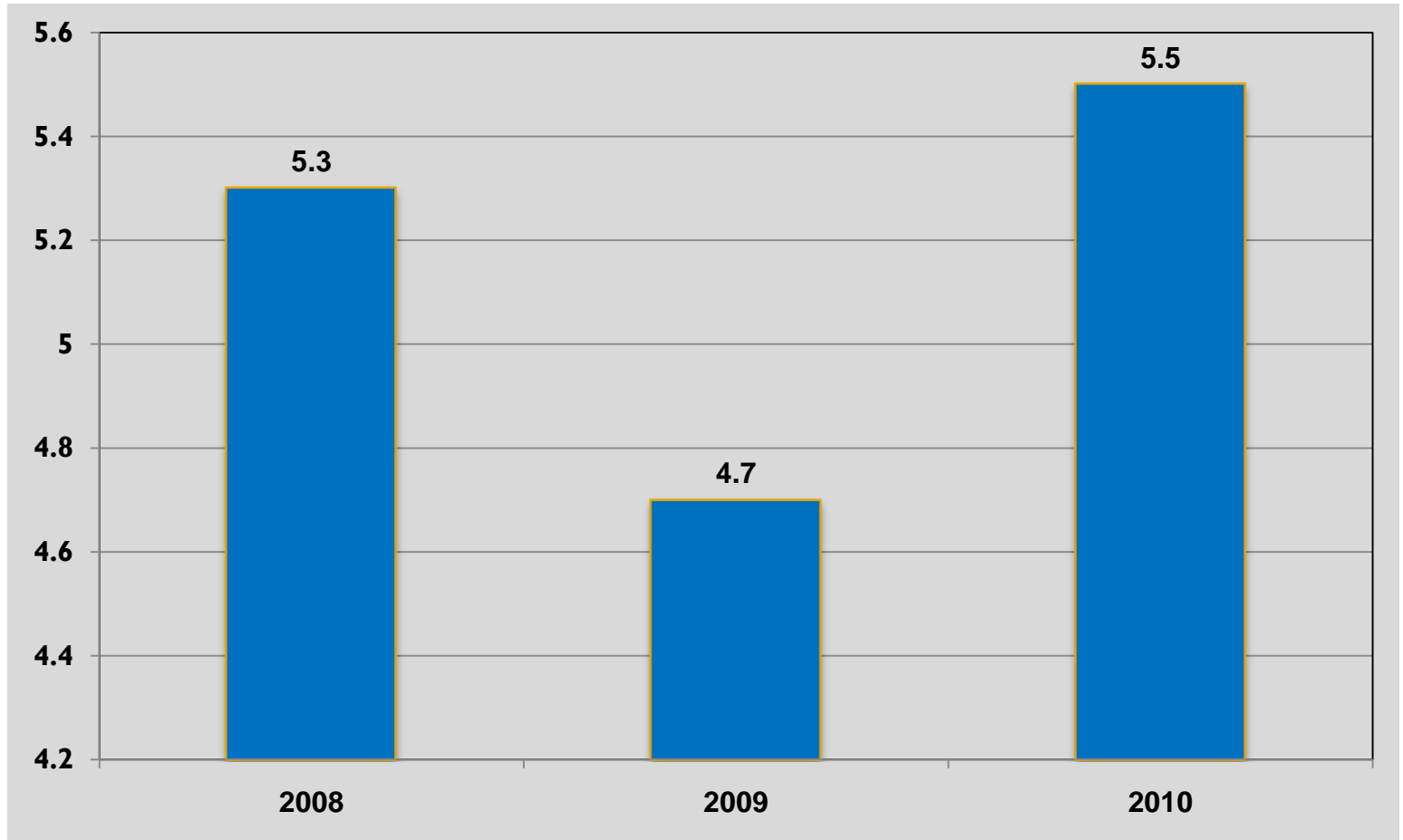
Response Change 2010 vs 2009



Calls For Service By Community



Average Concurrent Incidents Per 24 Hours



CONCURRENT INCIDENTS ARE CALLS FOR SERVICE THAT OVERLAP OR ARE SIMULTANEOUS.

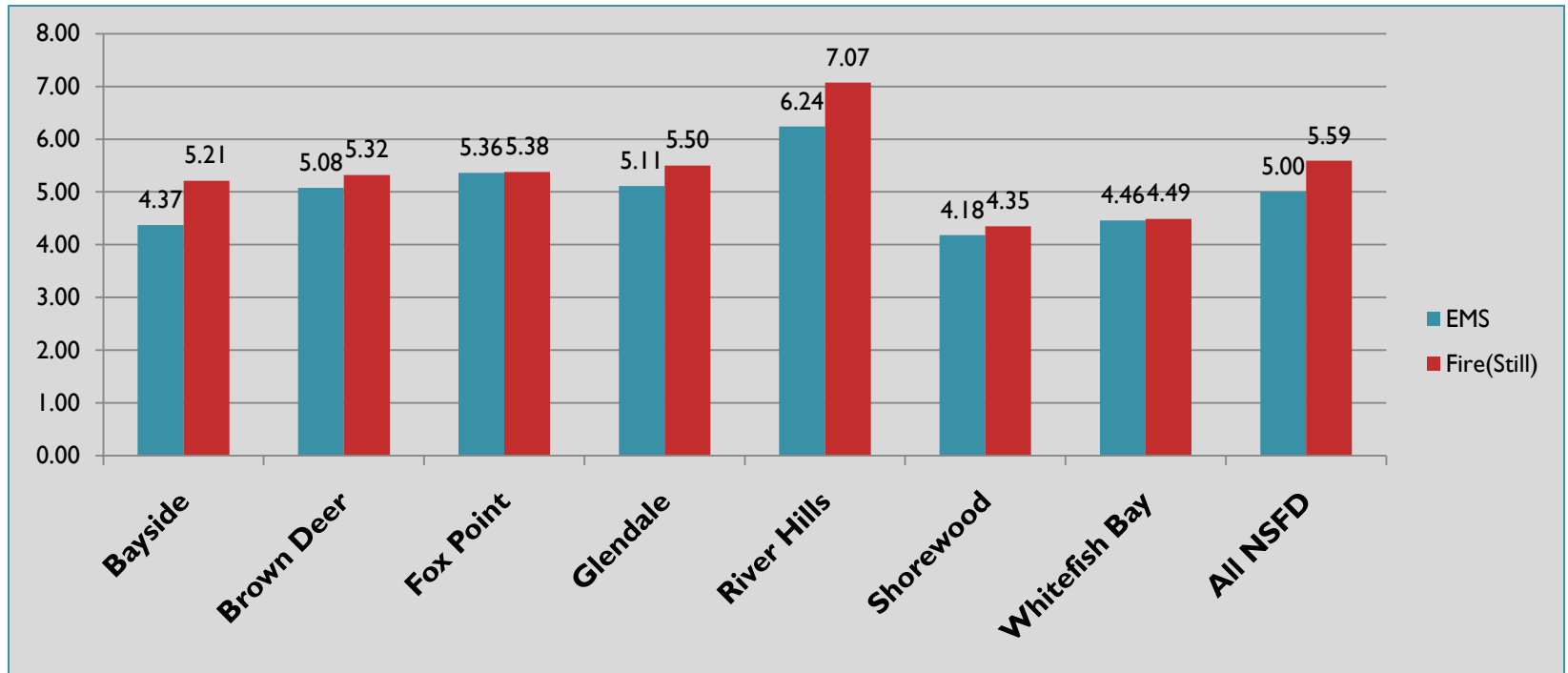


Average Total Time from Call Received to Call Cleared

- EMS: 30 minutes 10 Seconds
- Fire Incidents: 29 Minutes 29 Seconds



2010 Response Times

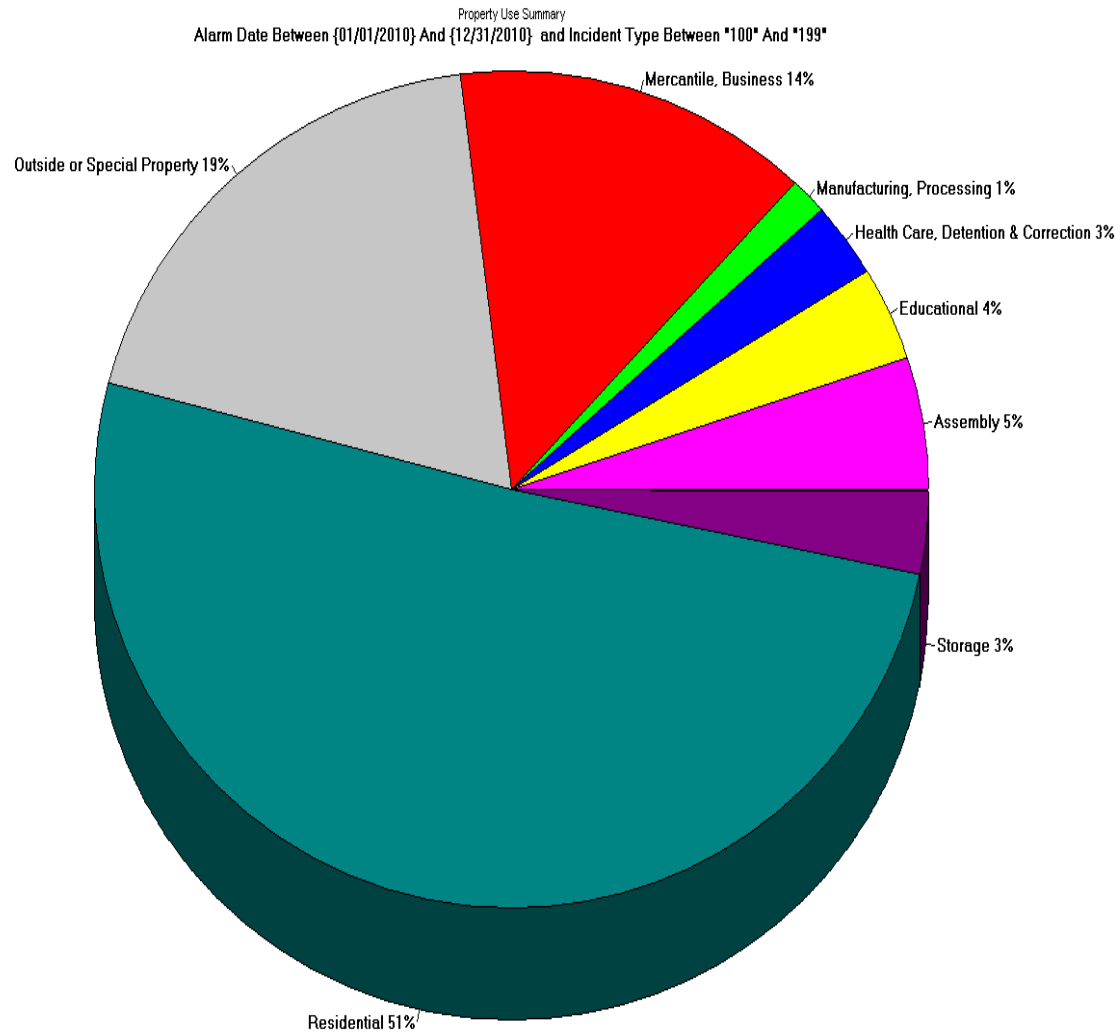


NATIONAL FIRE PROTECTION ASSOCIATION RESPONSE TIME STANDARDS

- **TOTAL TIME FOR FIRST FIRE RESPONSE ON SCENE 90% OF THE TIME: 6 MINUTES 20 SECONDS**
6 MINUTES = 60 SECONDS DISPATCH + 80 SECONDS TURNOUT + 4 MINUTE RESPONSE
- **TOTAL TIME FOR FIRST EMS ON SCENE 90% OF THE TIME: 6 MINUTES**
6 MINUTES = 1 MINUTE DISPATCH + 1 MINUTE TURNOUT + 4 MINUTE RESPONSE



Fires By Occupancy Type



Incident Type Report

Incident Type	2010	2009	2008
Building Fire	52	44	39
Passenger Vehicle Fire	13	19	24
EMS Incident	4343	4149	4198
Motor Vehicle Accident	229	239	249
Removal From Stalled Elevator	17	18	20
Gas Leak (Natural Gas)	55	71	65
Carbon Monoxide Incident	106	88	78
Power Line Down	49	34	45
Arcing/Shorted Electrical Equipment	58	33	48
Smoke Scare	60	44	58
Smoke Detector Malfunction	60	66	62
Alarm System Malfunction	122	122	80
Smoke Detector Activated Due to Smoke	241	253	298



Alarm Type Report

Alarm Type	2010#	2010%	2009 #	2009%
Basic Life Support	2682	43.46%	2529	42.61%
Advanced Life Support	1676	27.16%	1636	27.56%
Motor Vehicle Accident	217	3.51%	227	3.82%
Accident with Extrication	11	.17%	11	0.18%
CO Call	112	1.81%	98	1.65%
Wires (Power Lines)	79	1.28%	49	0.82%
Fire Alarm	751	12.17%	789	13.29%
Limited Fire	422	6.83%	378	6.37%
Still Alarm (Fire)	193	3.12%	189	3.18%
Working Incident	4	.06%	4	0.06%
Box Alarm	2	.03%	2	0.03%
2nd Alarm	0	0%	2	0.03%
Mutual Aid	16	.25%	20	0.33%



Fire Response Deaths/Injuries For 2010

- **Civilian Fire Deaths: 0**
- **Civilian Fire Injuries: 10**
- **Firefighter Fire ground Injuries: 2***

**Average Number of Fire ground Injuries In Fire Departments Protecting Populations of 50,000 to 99,999*: 4.7*

**U.S Firefighter Injuries Survey-2009 National Fire Protection Association*

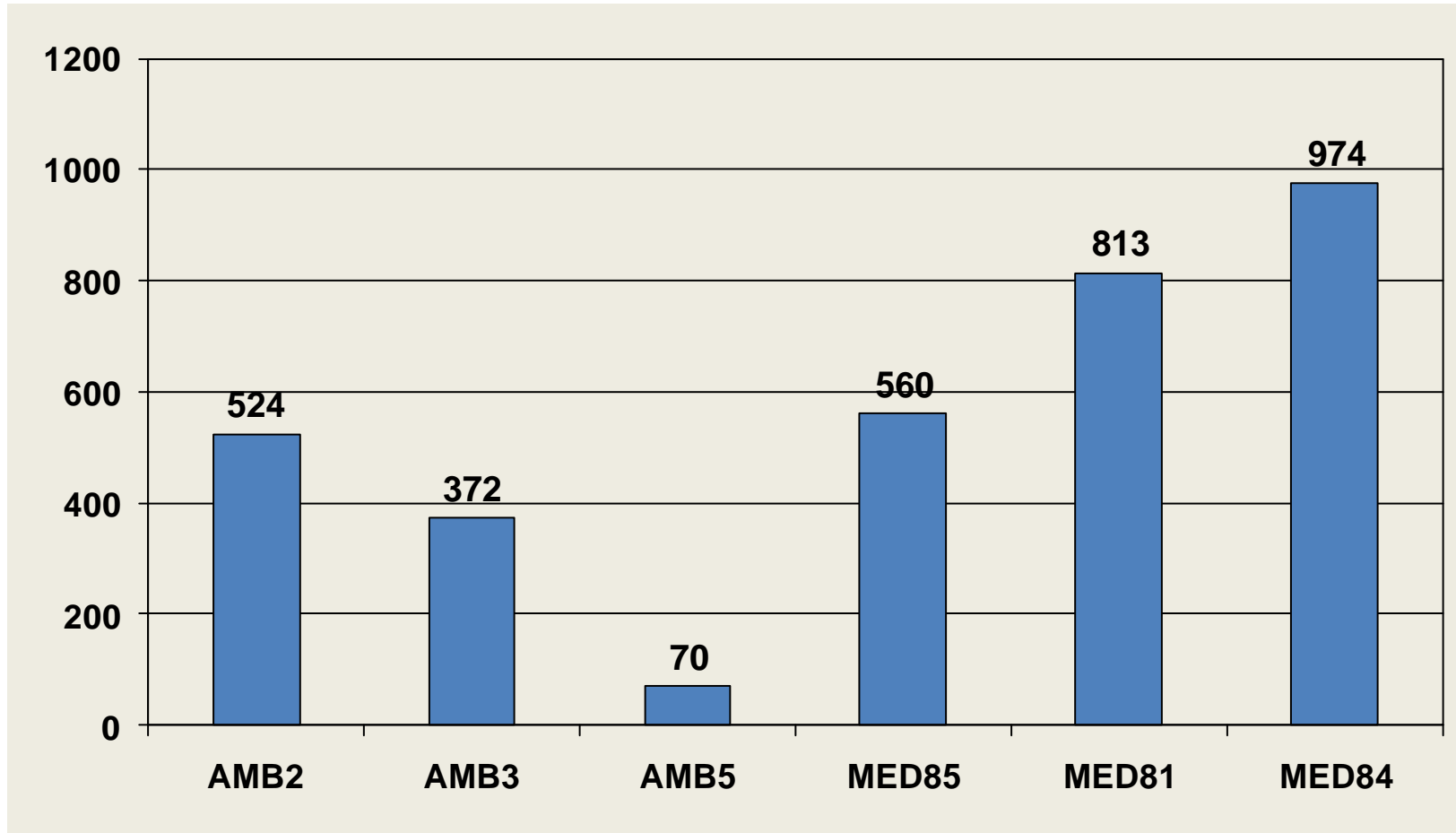


2010 Property Loss Data

- **Property Value At Risk: \$131 Million**
- **Property Loss Due To Fire: \$1.4 Million**
- **Total Improvement Value: \$6.3 Billion**
- **Total % of Property Saved: 98.9%**



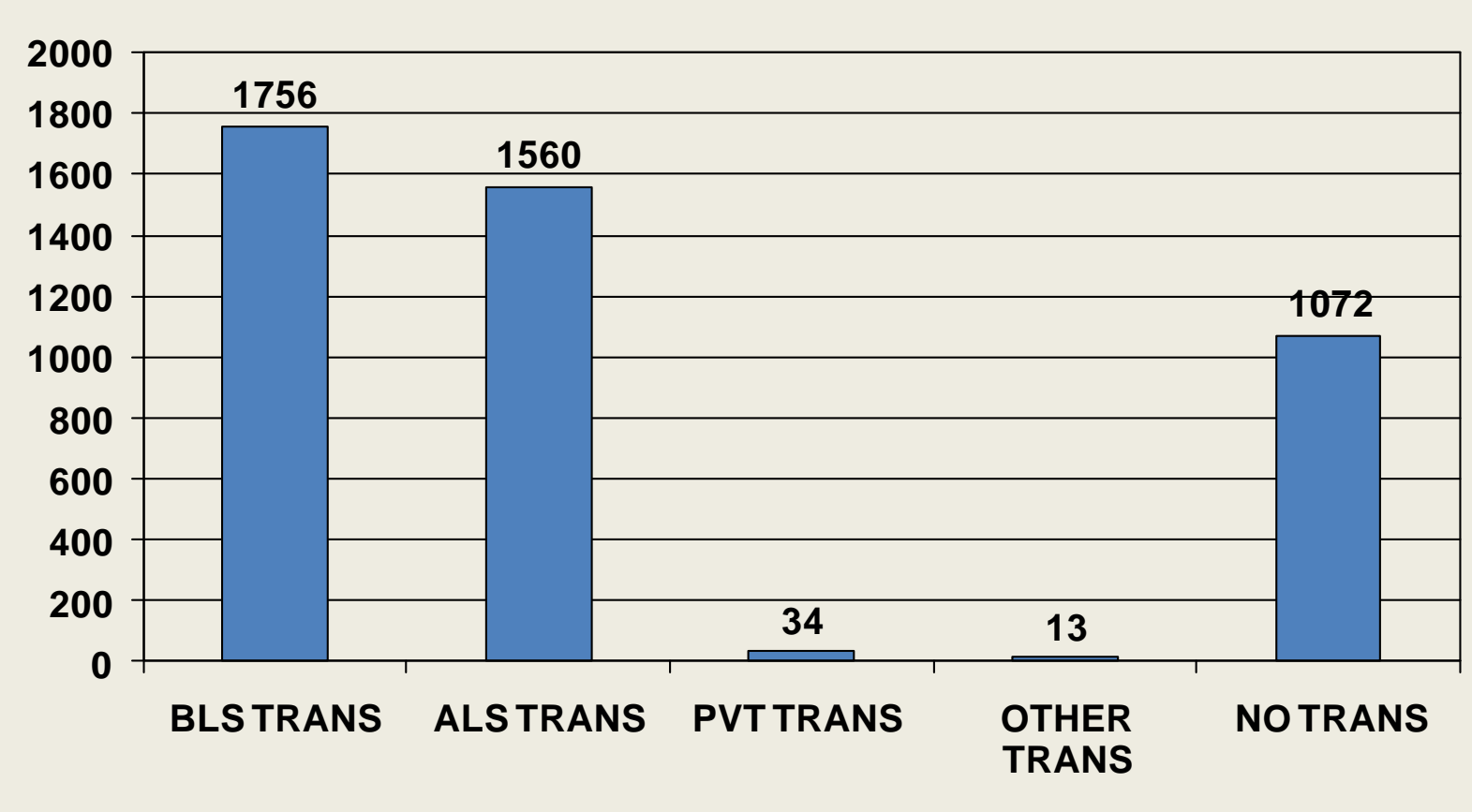
EMS Unit Transports



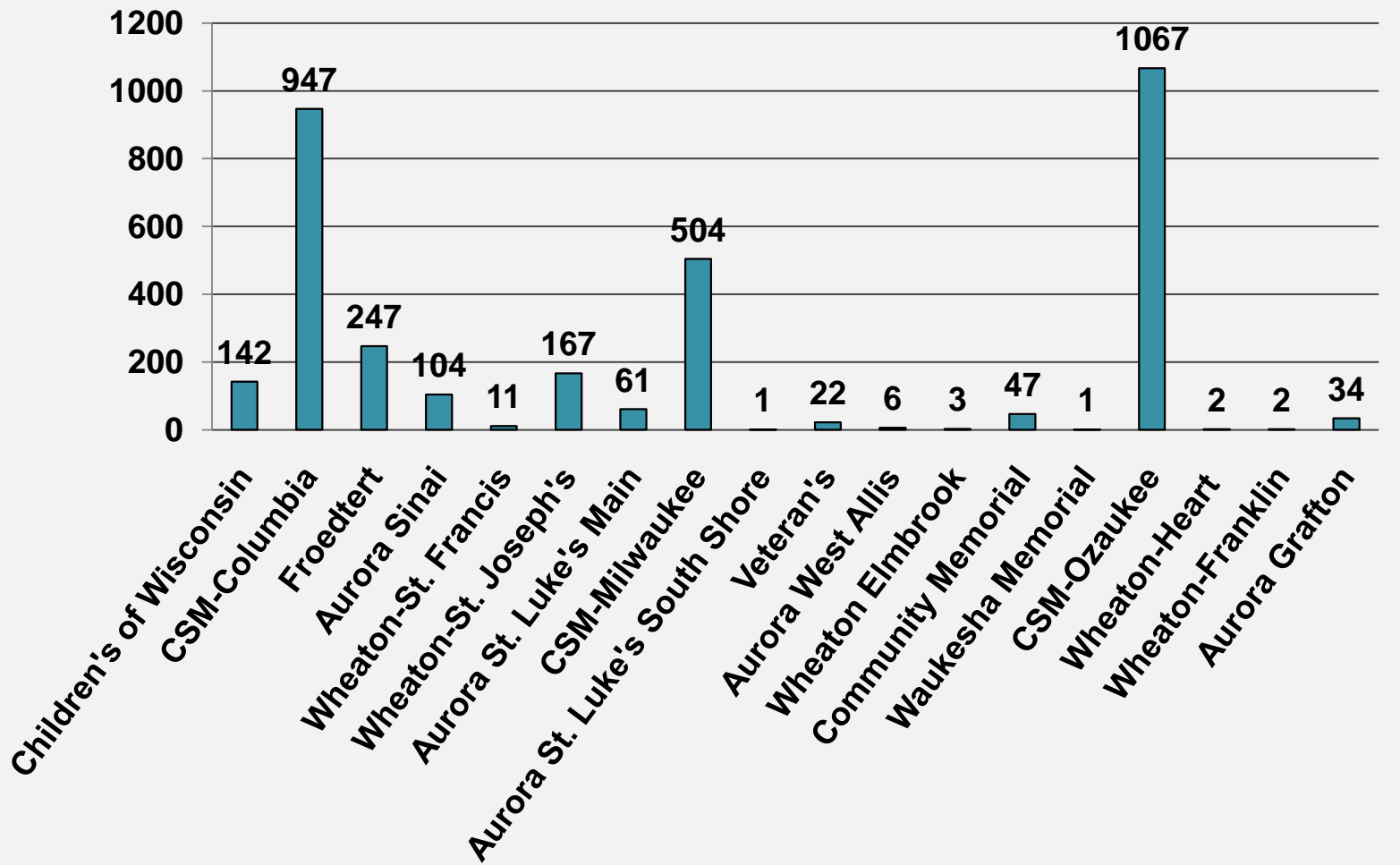
**A5 and M85 are same vehicle.*



Patient Disposition



Hospital Destinations



EMS Provider Impression

2010 Patient Assessments Performed

ARRHYTHMIA / PALPITATION	78	SUBSTANCE ABUSE	36
CARDIAC ARREST	69	ALLERGIC RX	39
CHF	31	HYPOTENSION / SHOCK	96
AIRWAY OBSTRUCTION	19	OTHER VASCULAR	13
COPD	7	HYPERTENSION	31
ASTHMA	26	ALTERED CONSCIOUSNESS	130
INHALATION INJURY	4	CVA / TIA	99
RESPIRATORY ARREST	6	SEIZURE	117
RESPIRATORY DISTRESS	287	SYNCOPE	136
COUGH	8	TRAUMA - BLUNT	812

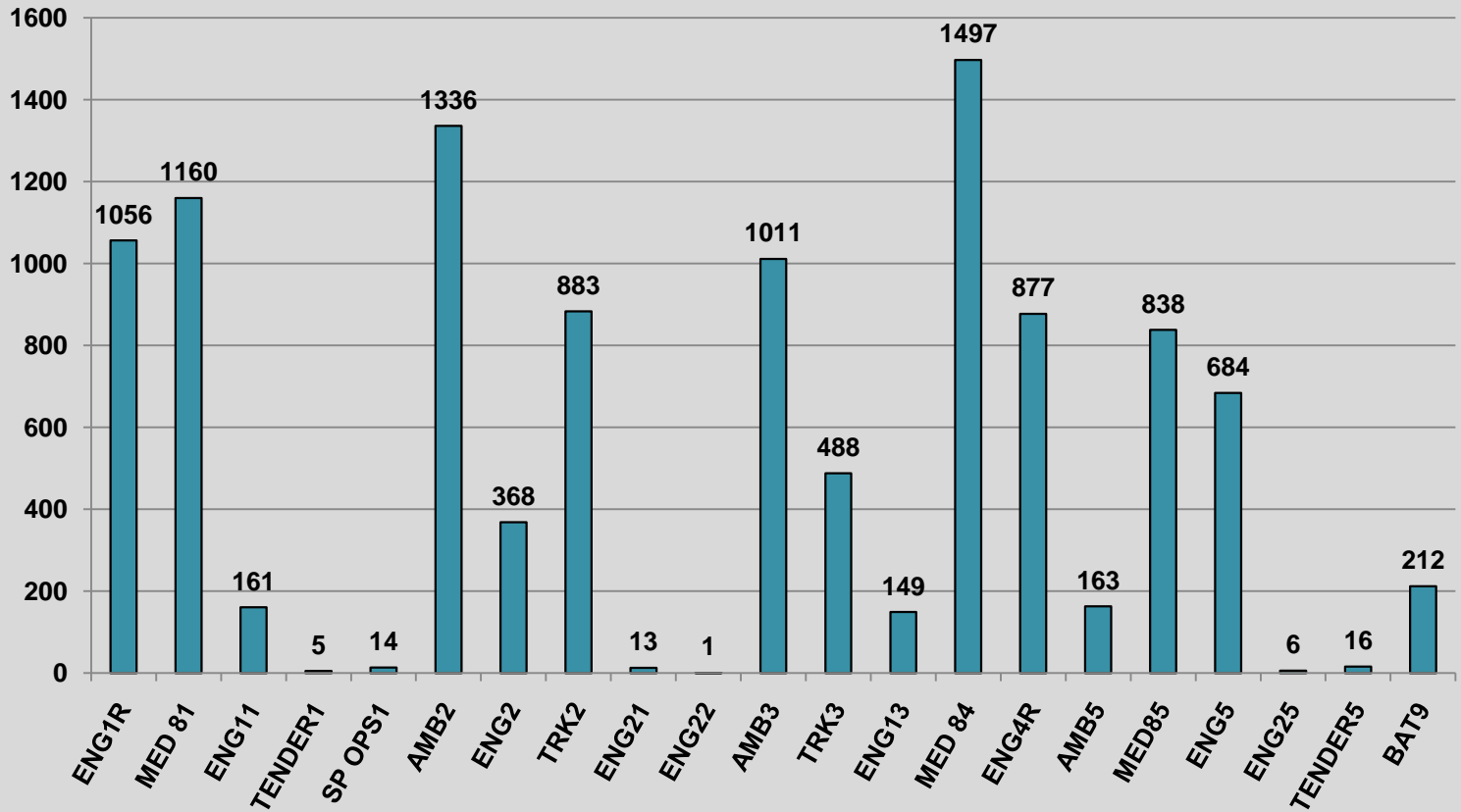


MUTUAL AID RESPONSES

	2010	2009	2008
Mutual Aid Given Fire	15	12	11
Mutual Aid Given EMS	6	6	3
Mutual Aid Received Fire	20	8	10
Mutual Aid Received EMS	30	22	44



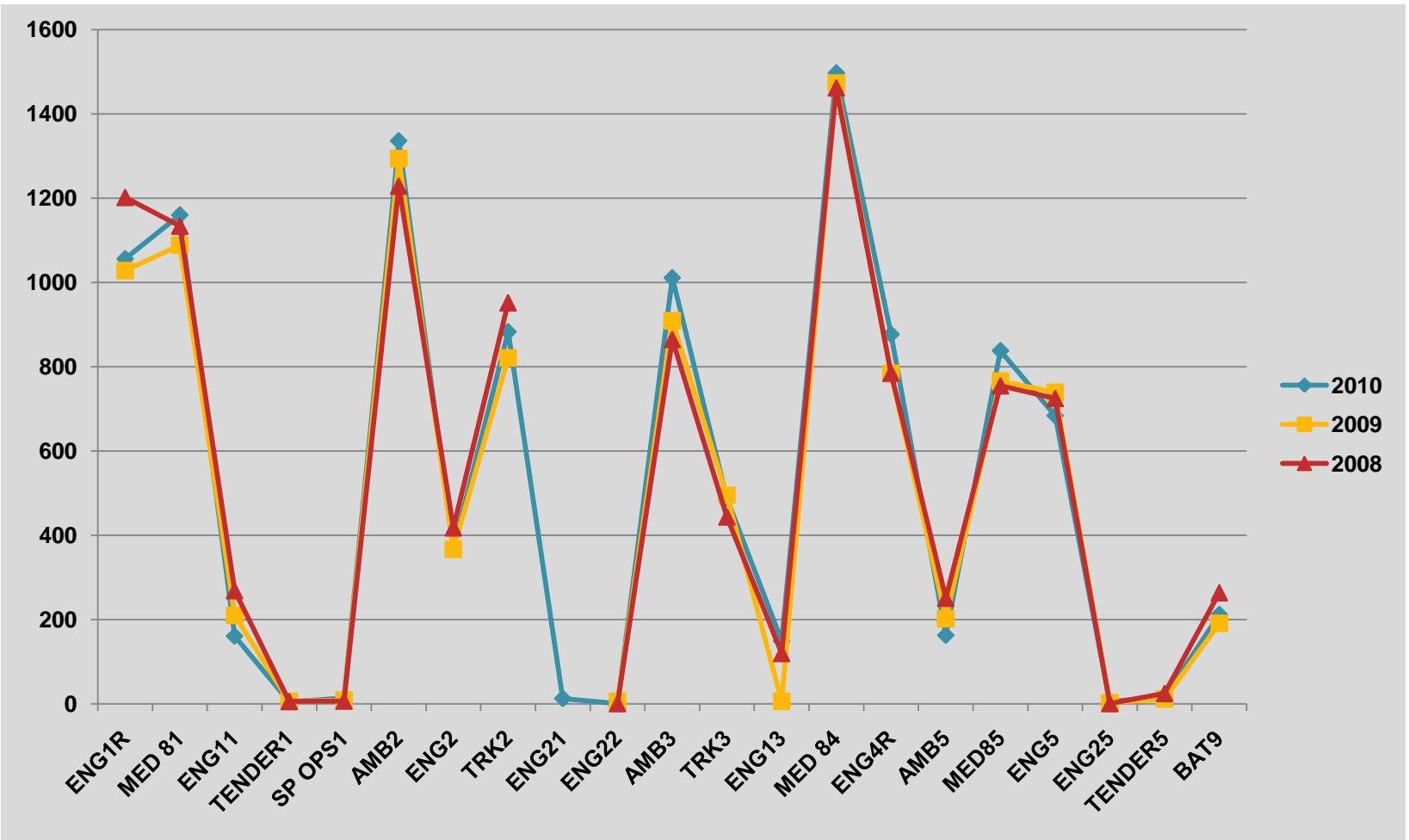
Unit Responses



**A5 and Med85 are same apparatus. Identity based on paramedic staffing for shift.
 Eng 21, Eng 22, Eng 25 are reserve apparatus.
 Eng 13 replaces Trk 3 when out for maintenance.*



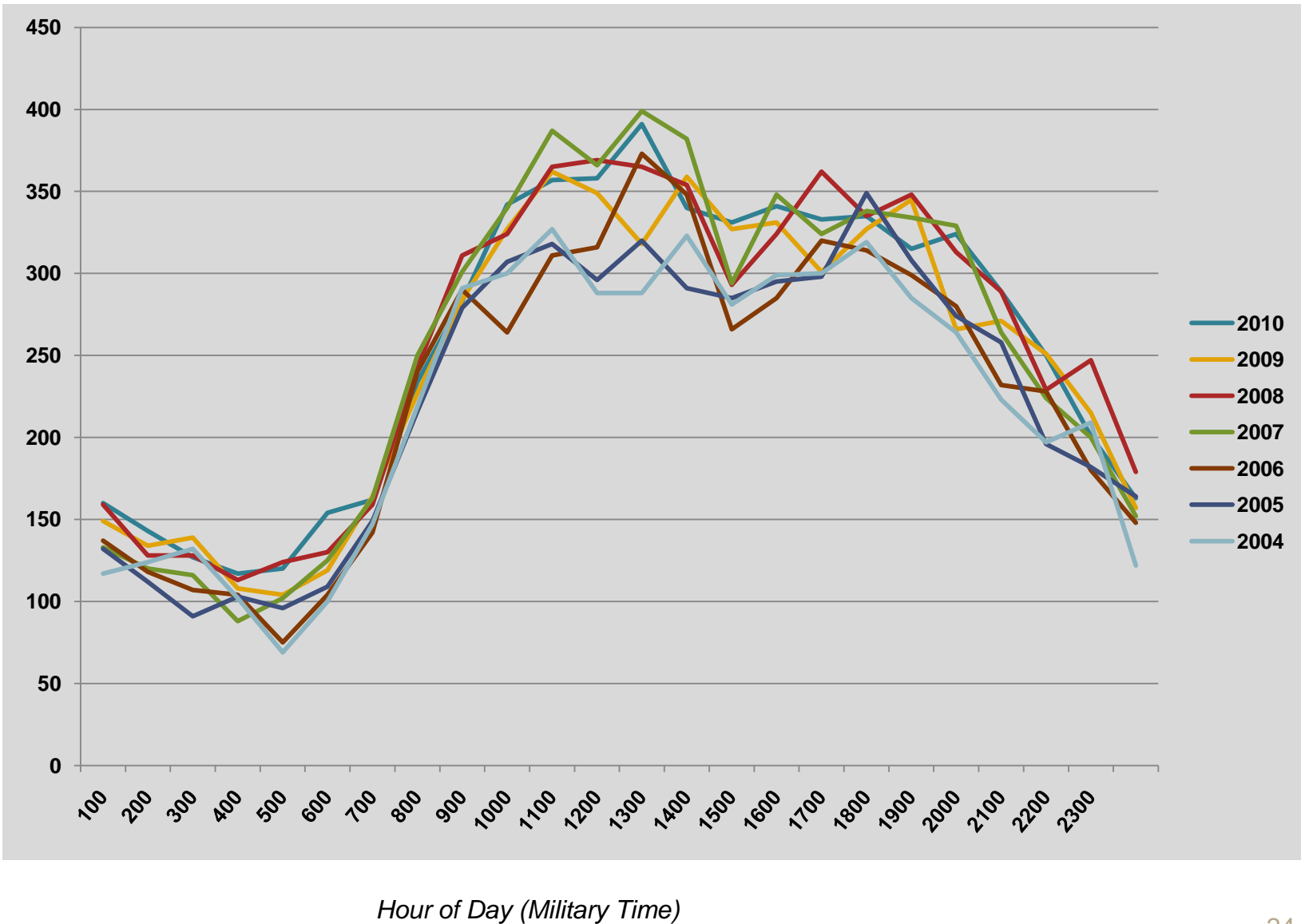
Historical Unit Responses



(Note That AMB5 & MED85 Are The Same Unit But Different Designation Based On Number of Paramedics Available.)



Responses By Time of Day (Fire & EMS)



Responses By Day of Week (Fire & EMS)

